

Skyscraper by modern legendary architect :

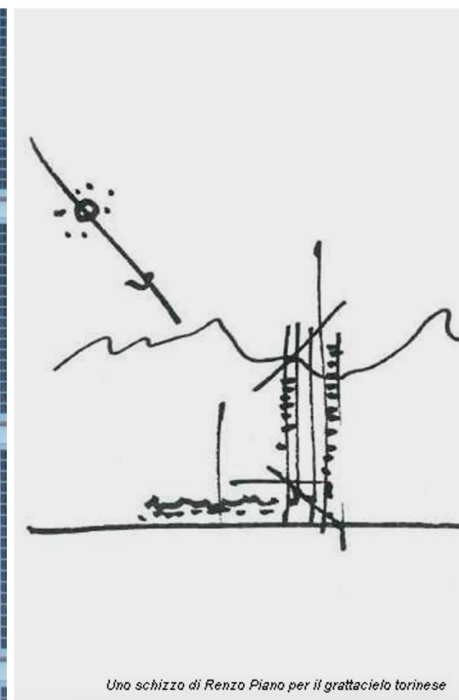
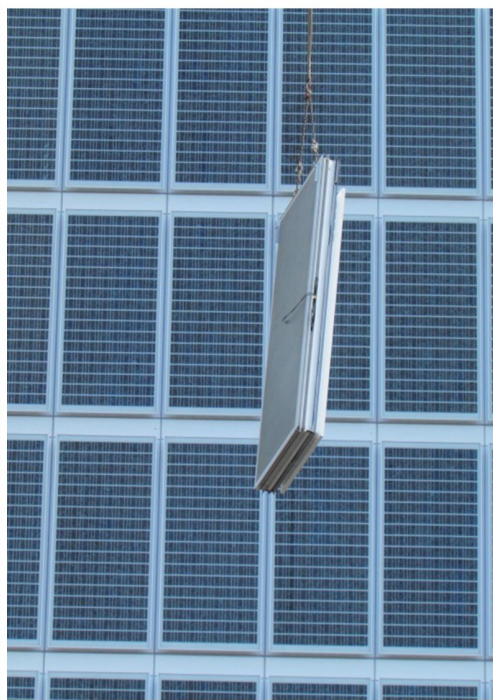
## Bank Headquarter Skyscraper

- Building-integration Type: Façade
- Color : LOF Stone Elegance
- Finished: 2014

LOF's acclaimed Marble series Stone Elegance is designed into a skyscraper by a famous Italian architect. His work consistently focuses on the artistic and technical details of architecture. The building is described as a "bioclimatic building", naturally ventilated and cooled. The Stone Elegance photovoltaic panels that cover the southern façade of the bank headquarter will generate 185kw power.



Photo Credit: Davide Pedretti-Biagioni



Uno schizzo di Renzo Piano per il grattacielo torinese

The bioclimatic building with innovative energy management ▲

Glass-glass laminate with marble-like Stone Elegance solar cell inside ►



LOF SOLAR CORPORATION

<http://www.lofsolar.com>

✉ [sales@lofsolar.com](mailto:sales@lofsolar.com)

☎ +886 3 666 2616

